

料 号 705-ZCD100-00

项 目 OC-D1 说明书

成品尺寸 75*90 mm

公 差 $\pm 1\text{mm}$

材 质 105g 哑粉纸

工 艺 骑马订

颜色要求 双色印刷

PANTONE 1235C

其 他

包装结构 江叶群 产品 张欣

设计师 李佳龙 文案 伍青蕾

重要: PDF 文件仅供预览, 实际印刷请使用 AI 转曲文档
(或 Cdr 转曲文档)

 刀模线 > 标示线刀模线
 标示线 > 请勿印刷!

印刷要求:

色相正确、印迹牢固、套印准确、各色套印不露杂色,
套印误差 $\leq 1\text{mm}$, 模切走位 $\leq \pm 1\text{mm}$

合格证
QC PASS

深圳卓立久科技有限公司

地址：深圳市罗湖区桂园街道新围社区深南东路5033号金山大厦1208

电话：0755-25106331

Zeniko Technology Co., LTD

Add: 1208 Room, Jinshan Building, No.5033, Shennan East Road, Xinwei Community,
Guiyuan Street, Luohu District, Shenzhen City

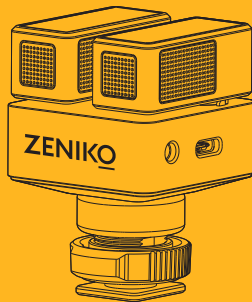
Tel: +86-755-25106331

www.zeniko.com

Made in China | 705-ZCD100-00



ZENIKO



OC-D1

立体声机顶麦克风

Stereo On-camera Microphone

前言

OC-D1 是一款双咪头机顶麦克风，每个咪头都能水平旋转 180°；混音、立体声模式一键方便切换；低切功能主动过滤频率 150Hz 以下的杂音；三档可调增益提高或降低录入声音响度。本产品小巧精致，减震支架与主体一体式设计，常用于 vlog 拍摄、视频录制、直播等多种场景。

使用本产品之前，请仔细阅读说明书，以便正确操作及使用。

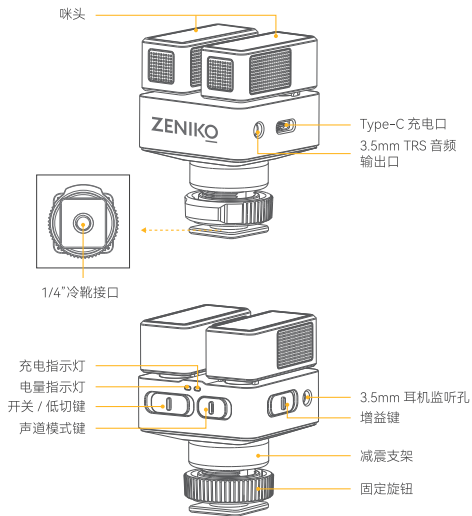
主要特点：

- 心型指向，有效降低周围环境噪音；
- 左右咪头均可水平旋转 180°；
- 低切频率 150Hz 过滤低频杂音；
- 混音 / 立体声模式一键切换；
- 三档增益调节：-10dB/0dB/+10dB；
- 电量指示灯，方便监测电量状态；
- 减震支架与麦克风一体式设计；
- 内置锂电池通过 Type-C 接口充电；

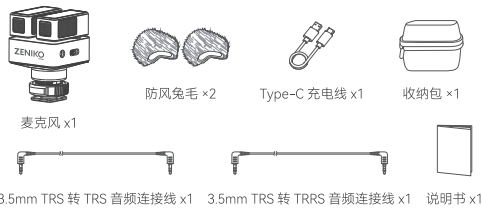
警告

- ▲ 麦克风是精密设备。请勿使其掉落或受到撞击，以避免发生故障。
- ▲ 请勿私自拆卸、改装或尝试维修本产品。产品如出现故障须由本公司或授权的维修人员进行检查维修。
- ▲ 请保持干燥，请勿用湿手握持本产品，亦不可将产品浸入水中或暴露于雨中。
- ▲ 请勿将本产品存放在阳光直射的地方、加热装置附近或者炎热、潮湿或多尘的地方。
- ▲ 请勿让儿童接触本产品，以避免发生意外。
- ▲ 请勿在易燃易爆环境中使用。在这些场合下，请注意相关警告标识。
- ▲ 请勿放置在超过 45 度的高温环境中。
- ▲ 请仔细阅读并遵守由厂商提供的警告或指示。

产品结构



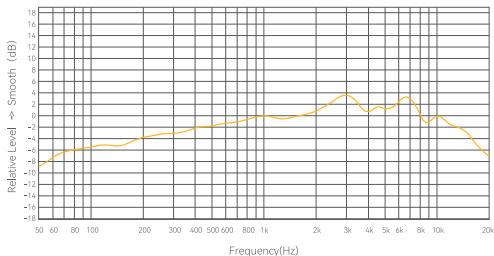
标配物品



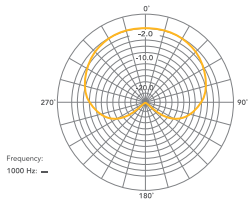
3.5mm TRS 转 TRS 音频连接线 x1 3.5mm TRS 转 TRRS 音频连接线 x1 说明书 x1

温馨提示：说明书中的图片均为示意图，仅供参考。由于产品不断更新与升级，产品实物与图片可能存在差异，请以实物为准。

频率响应



指向性



使用说明

1. 充电指示灯

充电时指示灯常亮红色，充满电时常亮绿色。

2. 电量指示灯

开机后，电量 100%-25% 时指示灯常亮绿色；电量低于 25% 时指示灯为红色缓慢闪烁；低于 10% 时指示灯为红色快速闪烁。

3. 开关 / 低切键

从左至右拨动，依次为关闭麦克风、开启麦克风、打开低切 (150Hz) 功能。

4. 声道模式键

向左拨动为立体声 (S) 模式，向右拨动为混音 (M) 模式。

注：连接手机时，麦克风无法使用立体声功能。

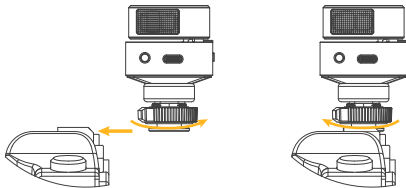
5. 增益键

从左至右拨动，依次为三个档位增益调节：衰减 -10dB、默认 0dB、增加 +10dB。

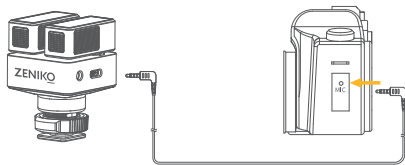
安装说明

1. 搭配相机

1.1 先将麦克风冷靴接口的固定旋钮逆时针拧松，然后插入相机冷靴座中，再顺时针拧紧固定旋钮。

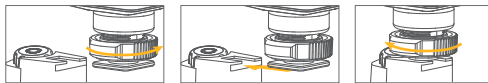


1.2 将 3.5mm TRS-TRS 音频连接线的一端连接到麦克风机身的音频输出接口，另一端连接到相机的麦克风输入接口。

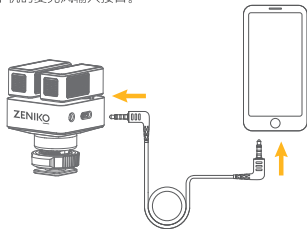


2. 搭配手机

2.1 先将麦克风冷靴接口的固定旋钮逆时针拧松，然后插入手机支架的冷靴座中，再顺时针拧紧固定旋钮。或直接向 1/4" 冷靴接口连接适用的手机支架。



2.2 将 3.5mm TRS-TRRS 音频连接线的一端连接到麦克风机身的音频输出接口，另一端连接到手机的麦克风输入接口。



3. 安装兔毛



规格参数

| | |
|--------|-----------------|
| 型号 | OC-D1 |
| 指向性 | 心型指向 |
| 频率范围 | 20Hz~20KHz |
| 低切频率 | 150Hz |
| 增益档位 | -10dB/0dB/+10dB |
| 灵敏度 | -38dB±3dB |
| 信噪比 | >70dB |
| 最大 SPL | >109dB |
| 锂电池容量 | 230mAh |
| 音频输出接口 | 3.5mm |
| 续航时间 | 约 15 小时(录音状态下) |
| 工作环境温度 | -10°C~+45°C |
| 尺寸 | 62x43x43mm |
| 净重 | 57g |

* 规格参数如有变更, 恕不另行通知。

维护保养

避免跌落: 如果受到强烈碰撞或振动, 设备可能会发生故障。

保持干燥: 本产品是非防水产品, 如果将其浸入水中或放置于高湿度的环境中将可能发生故障。内部构造生锈可能会导致无法修理的损害。

避免温度骤变: 温度的突变, 诸如在寒冷天进出温暖的大楼将可能会使产品内部结露。为避免结露, 请将本产品事先装入手提袋或塑料包内, 以防温度突变。

远离强磁场: 无线电广播发射机等设备产生的强静电或强磁场可能会干扰本产品正常工作。

如有技术更改, 恕不另行通知。

FOREWORD

Thank you for purchasing!

OC-D1 is a simple but functional microphone with horizontally 180° rotatable dual-mic. Mono and stereo modes are conveniently switchable. Low cut function actively filters noise below 150Hz. Three levels of adjustable gain increase or decrease the loudness. This product is small and delicate, with an integrated design of shock-absorbing bracket and main body, which is commonly used in vlogging, video recording, live streaming and other scenarios.

Please read this manual carefully before using to make sure the correct operation and exert the optimum function.

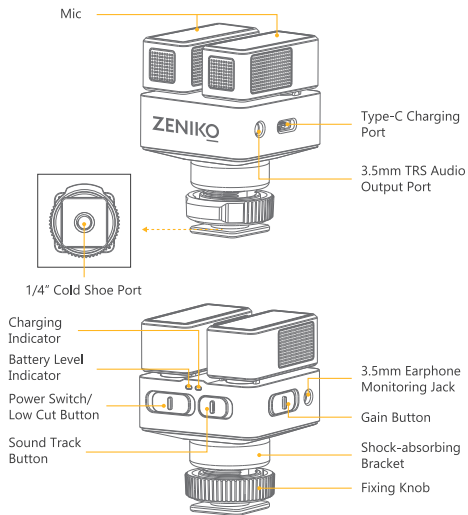
MAIN FEATURES

- Cardioid directivity, effectively reduce the surrounding noise.
- Two mics on the top are horizontally 180° rotatable.
- Equipped with low cut function (150Hz).
- Two sound track modes: mono and stereo.
- Three levels of adjustable gain: -10dB/0dB/+10dB.
- Battery level indicator monitors the power status .
- Integrated design of shock-absorbing bracket and main body.
- Built-in lithium battery is chargeable through Type-C port.

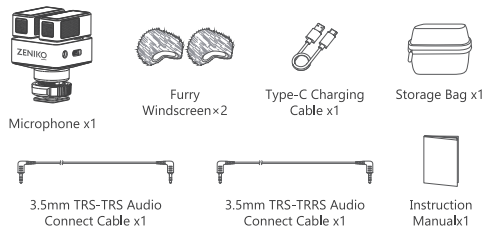
⚠ WARNING

- ⚠ Do not disassemble. Should repairs become necessary, this product must be sent to an authorized maintenance center.
- ⚠ Always keep this product dry. Do not use in rain or in damp conditions.
- ⚠ Keep out of reach of children.
- ⚠ Do not use the flash unit in the presence of flammable gas. In certain circumstance, please pay attention to the relevant warnings.
- ⚠ Do not leave or store the product if the ambient temperature reads over 45°C.
- ⚠ Read and understand all instructions before using.
- ⚠ Changes made to the specifications or designs may not be reflected in this manual.

NAME OF PARTS

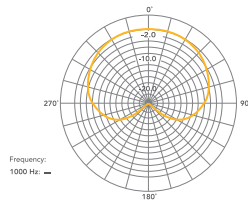


WHAT'S INSIDE

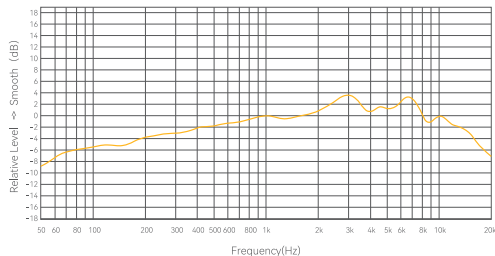


Note: Due to continuous updates and upgrades of the products, there may be differences between the actual products and the pictures. Therefore, the pictures are for reference only, products to prevail in kind.

DIRECTIVITY



FREQUENCY RESPONSE



OPERATION INSTRUCTION

1. Charging Indicator

The charging indicator will be constant on red in charging, and green after fully charged.

2. Battery Level Indicator

Power on the microphone, the battery level indicator will be constant on green in 100% to 25% battery level, flash red slowly in less than 25% battery level, flash red rapidly in less than 10% battery level.

3. Power Switch Button

Slide the power switch button to the left to turn off the microphone, slide it to the middle to turn on the microphone, slide it to the right to turn on the low cut (150Hz) function.

4. Sound Track Button

Slide the sound track button to the left to switch to stereo mode, slide it to the right to switch to mono mode.

Note: The stereo mode is unavailable when connecting to smartphones.

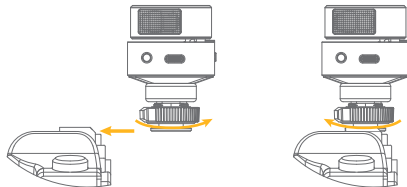
5. Gain Button

Slide the gain button from left to right, the microphone will be in the following three modes respectively: -10dB (-10dB pad), 0dB (default gain) and +10dB (+10dB gain).

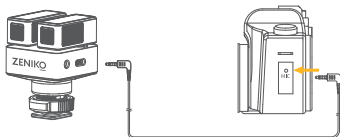
INSTALLATION INSTRUCTION

1. Attach to a Camera

1.1 Before attaching to the camera, please turn the microphone's fixing knob counterclockwise to loosen the cold shoe port until the microphone can be fully inserted into the camera's cold shoe, then tighten it by turning clockwise.

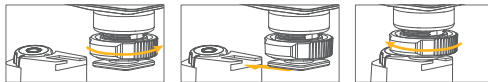


1.2 Connect one end of 3.5mm TRS-TRS audio connect cable to the microphone output port and the other end to the camera's microphone input port.

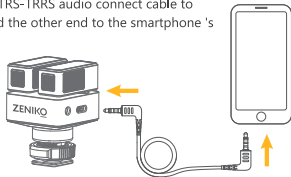


2. Attach to a Smartphone

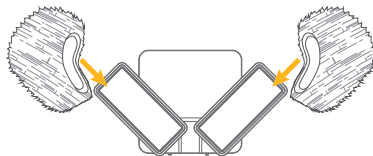
2.1 Before attaching to the smartphone, please turn the microphone's fixing knob counterclockwise to loosen the cold shoe port until the microphone can be fully inserted into the smartphone's bracket cold shoe, then tighten it by turning clockwise. The microphone can also be mounted onto suitable bracket directly through its 1/4" cold shoe port.



2.2 Connect one end of 3.5mm TRS-TRS audio connect cable to the microphone output port and the other end to the smartphone's microphone input port.



3. Installing the Fury Windscreen



TECHNICAL DATA

| | |
|---------------------------------|-----------------------------------|
| Model | OC-D1 |
| Directivity | Cardioid |
| Frequency Range | 20Hz-20KHz |
| Low Cut Frequency | 150Hz |
| Gain Level | -10dB/0dB/+10dB |
| Sensitivity | -38dB±3dB |
| Signal to Noise Ratio | >70dB |
| Max. SPL | >109dB |
| Lithium Battery Capacity | 230mAh |
| Audio Output Port | 3.5mm |
| Working Time | Approx. 15h (in recording status) |
| Working Environment Temperature | -10°C~+45°C |
| Dimension | 62x43x43mm |
| Net Weight with Bracket | 57g |

* Specifications and data may subject to changes without notice.

MAINTENANCE

Avoid sudden drops. The device may fail to work after strong shocks, impacts, or excess stress.

Keep dry. The product isn't water-proof. Malfunction, rust, and corrosion may occur and go beyond repair if soaked in water or exposed to high humidity.

Avoid sudden temperature changes. Condensation happens if sudden temperature changes such as the circumstance when taking the transmitter and receiver out of a building with higher temperature to outside in winter.

Keep away from strong magnetic field. The strong static or magnetic field produced by devices such as radio transmitters leads to malfunction.

Unauthorized service will void the warranty.

Changes made to the specifications or designs may not be reflected in this manual.

DECLARATION OF CONFORMITY

Zeniko Technology Co., LTD hereby declares that this equipment are in compliance with the essential requirements and other relevant provisions of Directive 2014/35/EU, 2014/30/EU. They are allowed to be used in all EU member states.

For more information of DoC, Please click this web link:

WWW.ZENIKO.COM/EU/OCD1.PDF

FCC STATEMENT

This device complies with part 15 of the FCC Rules. Operation is subject to the following two conditions:

- (1) This device may not cause harmful interference, and
- (2) this device must accept any interference received, including interference that may cause undesired operation.

Any Changes or modifications not expressly approved by the party responsible for compliance could void the user's authority to operate the equipment.

Note: This equipment has been tested and found to comply with the limits for a Class B digital device, pursuant to part 15 of the FCC Rules. These limits are designed to provide reasonable protection against harmful interference in a residential installation. This equipment generates uses and can radiate radio frequency energy and, if not installed and used in accordance with the instructions, may cause harmful interference to radio communications. However, there is no guarantee that interference will not occur in a particular installation. If this equipment does cause harmful interference to radio or television reception, which can be determined by turning the equipment off and on, the user is encouraged to try to correct the interference by one or more of the following measures:

- Reorient or relocate the receiving antenna.
- Increase the separation between the equipment and receiver.
- Connect the equipment into an outlet on a circuit different from that to which the receiver is connected.
- Consult the dealer or an experienced radio/TV technician for help.

产品保修

尊敬的用户，本保修卡是申请保修服务的重要凭证，请您配合销售商填写并妥善保管，谢谢！

| | | |
|-------|------|------|
| 产品信息 | 型号 | 产品条码 |
| 用户信息 | 姓名 | 联系电话 |
| | 通信地址 | |
| 销售商信息 | 名称 | |
| | 联系电话 | |
| | 通信地址 | |
| | 销售日期 | |
| 备注 | | |

注：此表应由销售商盖章确认。

适用产品

本文件适用于相关《产品保修信息》(见后面说明)所列产品，其他非属此范围的产品或部件(如促销品、赠品及其他出厂后附加的部件等)不在此保修承诺内。

保修期

产品及部件的相应保修期按相关的《产品保修信息》执行。保修期自产品首次购买日起算，购买日以购买产品时保修卡登记日期为准。

如何获得保修服务

要保修服务，您可直接与产品销售商或授权服务机构联系，也可拨打卓立久产品售后服务电话，与我们联系，由我们的服务人员为您安排服务。申请保修时，您应提供有效的保修卡作为保修凭证，方可获得保修。如您不能提供有效的保修卡，则在我们可确认产品或部件属于保修范围的情况下，也可以为您提供保修,但这不作为我们的义务。

不适用保修的情况

如产品存在下列情况，本文件项下的保证和服务将不适用 ① 产品或部件超过相应保修期；② 错误或不适当使用、维护或保管导致的故障或损坏，如：不当搬运；非按产品合理预期用途使用；不当插拔外接设备；跌落或外力挤压；接触或暴露于不适当温度、溶剂、酸碱、水浸或潮湿环境；③ 由非卓立久授权机构或人员安装、修理、更改、添加或拆卸造成的故障或损坏；④ 产品或部件原有识别信息被修改变更或删除；⑤ 无有效保修卡；⑥ 使用非合法授权、非标准或非公开发行的软件造成的故障或损坏；⑦ 因不可抗力或意外事件造成的故障或损坏；⑧ 其他非因产品本身质量问题导致的故障或损坏。遇上述情况，您应向相关责任方寻求解决，卓立久对此不承担任何责任。因非在保修期或保修范围内的部件、附件或软件导致产品不能正常使用的，不是保修范围内的故障。产品使用过程中正常的脱色、磨损和消耗，不是保修范围内的故障。

产品保修和服务支持信息

产品的保修期和服务类型按以下《产品保修信息》执行：

| 产品类别 | 选件名称 | 保修期(月) | 保修服务类型 |
|------|--|--------|--------|
| 部件 | 电路板 | 12 | 客户送修 |
| | 电池 | 3 | 客户送修 |
| | 充电器等带电性能的部件 | 12 | 客户送修 |
| 其他 | 如电池盒、防风棉、防风毛罩、锁紧装置、手提绳、扎带、魔术贴、领夹、便携袋、包装等 | 无 | 无保修 |

卓立久产品售后服务电话：0755-25106331

WARRANTY

Dear customers, as this warranty card is an important certificate to apply for our maintenance service, please fill in the following form in coordination with the seller and safe-keep it. Thank you!

| | | |
|----------------------|----------------|---------------------|
| Product Information | Model | Product Code Number |
| Customer Information | Name | Contact Number |
| | Address | |
| Seller Information | Name | |
| | Contact Number | |
| | Address | |
| | Date of Sale | |
| Note: | | |

Note: This form shall be sealed by the seller.

Applicable Products

The document applies to the products listed on the Product Maintenance Information (see below for further information). Other products or accessories (e.g. promotional items, giveaways and additional accessories attached, etc.) are not included in this warranty scope.

Warranty Period

The warranty period of products and accessories is implemented according to the relevant Product Maintenance Information. The warranty period is calculated from the day(purchase date) when the product is bought for the first time, And the purchase date is considered as the date registered on the warranty card when buying the product.

How to Get the Maintenance Service

If maintenance service is needed, you can directly contact the product distributor or authorized service institutions. You can also contact the Zeniko after-sale service call and we will offer you service. When applying for maintenance service, you should provide valid warranty card. If you cannot provide valid warranty card, we may offer you maintenance service once confirmed that the product or accessory is involved in the maintenance scope, but that shall not be considered as our obligation.

Inapplicable Cases

The guarantee and service offered by this document are not applicable in the following cases: ①. The product or accessory has expired its warranty period; ②. Breakage or damage caused by inappropriate usage, maintenance or preservation, such as improper packing, improper usage, improper plugging in/out external equipment, falling off or squeezing by external force, contacting or exposing to the improper temperature, solvent, acid, base, flooding and damp environments, etc; ③. Breakage or damage caused by non-authorized institution or staff in the process of installation, maintenance, alternation, addition and detachment; ④. The original identifying information of product or accessory is modified, alternated, or removed; ⑤. No valid warranty card; ⑥. Breakage or damage caused by using illegally authorized, nonstandard or non-public released software; ⑦. Breakage or damage caused by force majeure or accident; ⑧. Breakage or damage that could not be attributed to the product itself. Once met these situations above, you should seek solutions from the related responsible parties and Zeniko assumes no responsibility. The damage caused by parts, accessories and software that beyond the warranty period or scope is not included in our maintenance scope. The normal discoloration, abrasion and consumption are not the breakage within the maintenance scope

MAINTENANCE AND SERVICE SUPPORT INFORMATION

The warranty period and service types of products are implemented according to the following

Product Maintenance Information:

| Product Type | Name | Maintenance Period (month) | Warranty Service Type |
|--------------|--|----------------------------|---|
| Parts | Circuit Board | 12 | Customer sends the product to designated site |
| | Battery | 3 | |
| | Charger, Electrical Parts etc. | 12 | |
| Other Items | Battery Case, Windscreen Foam, Wind Cap, Locking Device, Lanyard, Tie, Velcro Tape, Clip, Bag, Package etc | NO | Without warranty |

Zeniko After-sale Service Call: +86-755-25106331